

HOW TO INSTALL DHL **CONNECT 3.3** ?

如何安裝 DHL **CONNECT 3.3** ?



DHLCONNECT

EXCELLENCE. SIMPLY DELIVERED.



1. How to Install DHL Connect 3.3 for the First Time:

- Go to DHL website at www.dhl.com.hk
- Select “Express” from the upper menu on DHL website and then “Resource Center”. Select “Downloads” from the pull-down menu.
- Click the “RUN” button to download **DHL Connect 3.3** to a temporary file. After downloading is completed, **DHL Connect 3.3** will be automatically installed on your PC. Click “RUN” to initiate installation.
- Choose “Hong Kong”, and click on “NEXT” as many times as required until the installation process is over.

2. How to Upgrade Older Versions of DHL Connect to 3.3:

If you are already a DHL Connect user and want to upgrade your old version to the newer one, you have two options:

Either:

- Click on the **DHL Connect** icon on your desktop.
- On the “Preparing Your Shipment” screen, you will be prompted to upgrade your current version.
- Choose the “**Upgrade**” option.



If you choose to download “**Later**” the system will remind you the next time you prepare your shipment that you need to upgrade your current version.

1. 如何首次安裝 DHL Connect 3.3 :

- 請瀏覽 DHL 網站 www.dhl.com.hk
- 從上層選單中選擇「Express」(速遞)，然後點擊「Resource Center」(資源中心)，再從下拉式選單中選擇「Downloads」(下載)
- 點擊「RUN」(執行) 按鈕，把 DHL Connect 3.3 下載至一個臨時檔案。下載完成後，DHL Connect 3.3 會自動安裝到您的個人電腦上，只要點擊「RUN」(執行) 按鈕，便可啟動安裝程序
- 選擇「Hong Kong」(香港)，然後一直點擊「NEXT」(下一步)，直至安裝程序完成

2. 如何更新舊版本的 DHL Connect 至 3.3 版本 :

如果您已經是 DHL Connect 的用戶，而想將現有的舊版本轉至新版本，您可選擇以下其中一個方法：

- 點擊個人電腦上的 DHL Connect 圖示
- 在「Preparing Your Shipment」(準備您的運件) 屏幕上會出現提示您更新現用版本的信息
- 選擇「Upgrade」(升級)



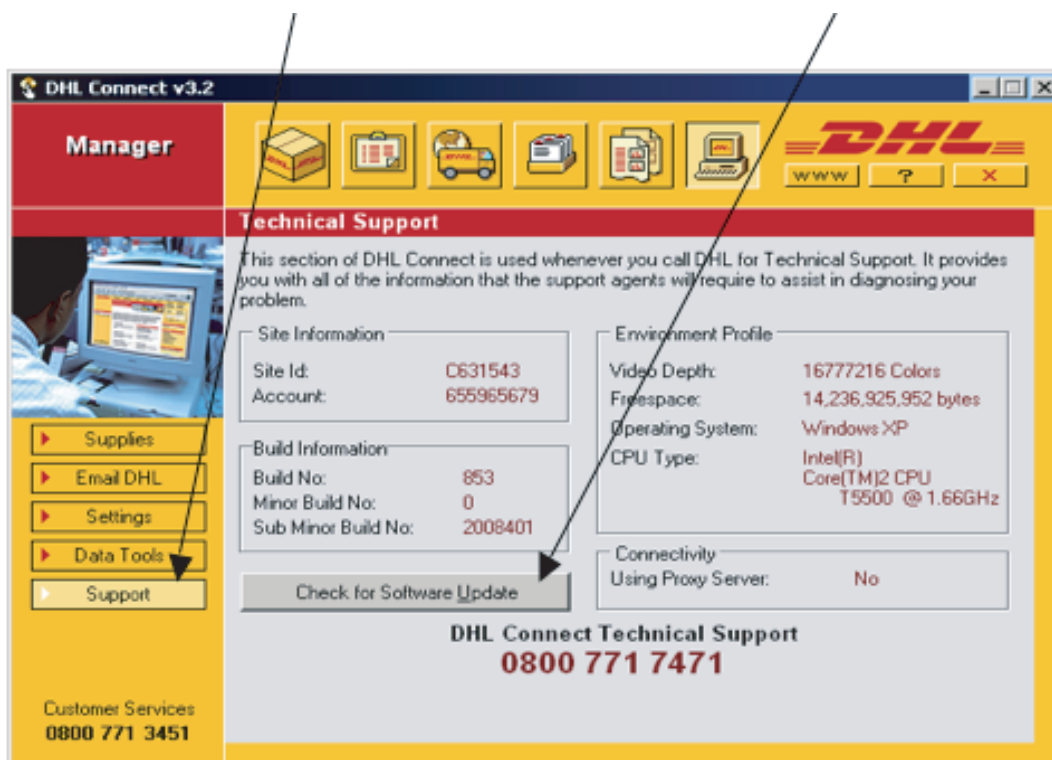
如果您選擇稍後下載「Later」(稍後)，系統便會於您下次準備運件時，再次提示您須更新現有版本。

Or:

- Access the old version of DHL Connect that you already have installed on your PC.
- Select “**Configuration and Options**” from the upper menu.



- Click on “**Support**” and then on “**Check for Software Update**” option.

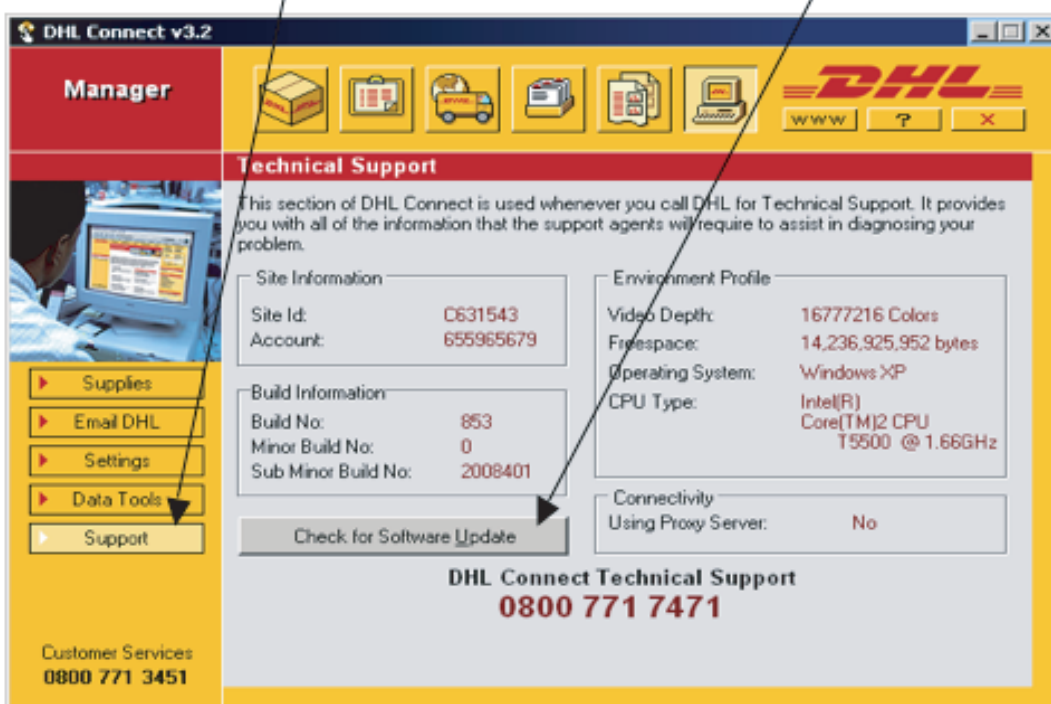


或：

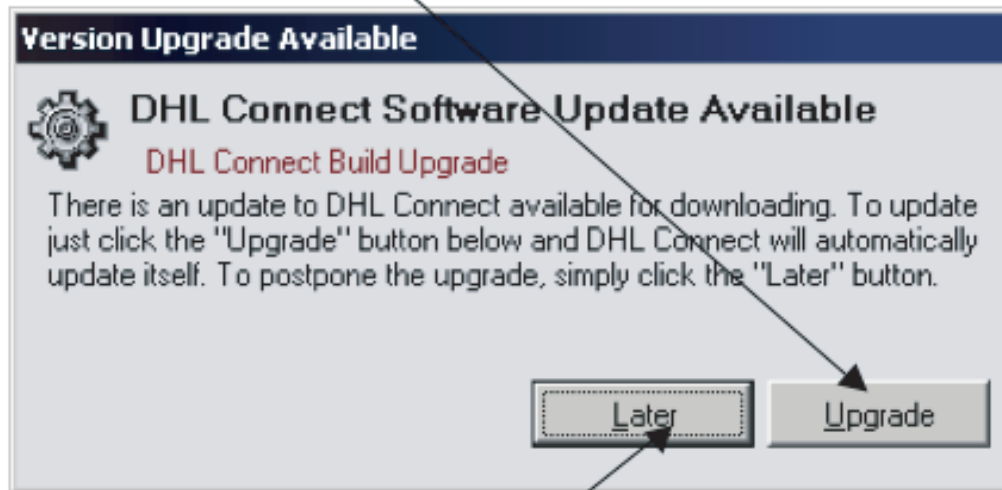
- 進入您已安裝於電腦上的舊版本 DHL Connect
- 從上層選單中選擇「Configuration and Options」(配置及選項)



- 點擊「Support」(支援)，然後再選擇「Check for Software Update」(檢查軟件更新)



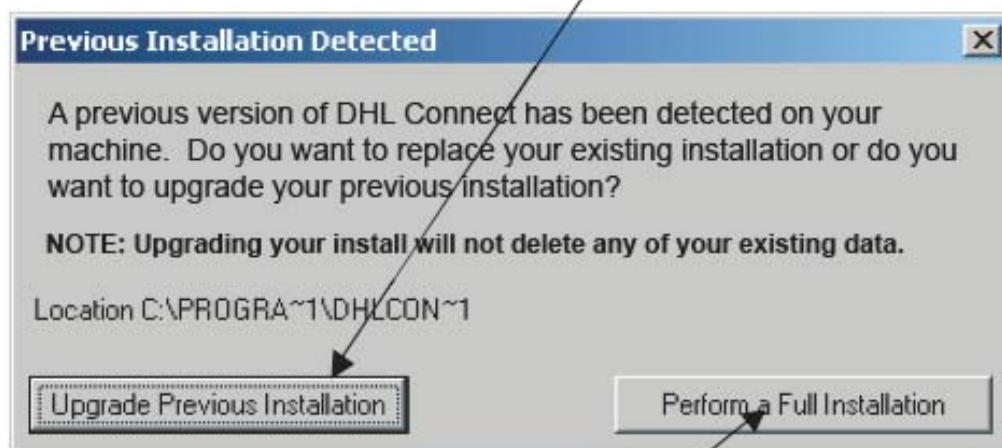
- Choose the “Upgrade” option.



If you choose to download “Later” the system will remind you the next time you prepare your shipment that you need to upgrade your current version.

IMPORTANT: By following the above process, your database will be retained in the new version (Shipper/Consignee and Shipment History).

Note: If your already-installed older version is either version 3.0 or 3.1, you will need to do the upgrade manually. Click the “Upgrade Previous Installation” button to keep your database as is.

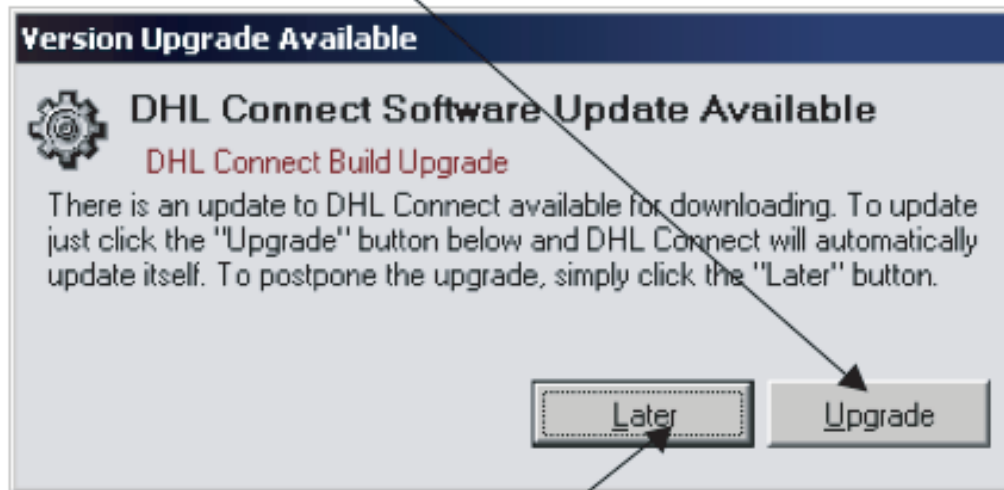


If you select “Perform a Full Installation,” you will lose your current database.

Need more details about DHL Connect?

Please call the DHL eCom hotline at (852) 2400-3521 during office hours, send an email to hkgwebmaster@dhl.com or contact your DHL Sales Executive.

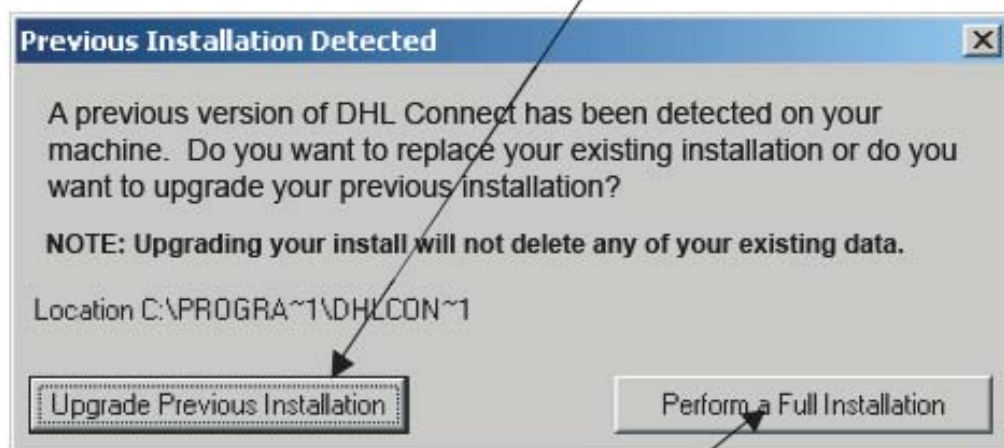
- 選擇「Upgrade」(升級)



如果您選擇稍後下載「Later」(稍後)，系統便會於您下次準備運件時，再次提示您須更新現有版本。

重要資訊：執行上述程序，您的資料庫便會保留在新版本中 (寄件人 / 收件人及過往付運記錄)。

注意：如果您已安裝的舊版本是3.0或3.1版本，便需要採用人手操控更新。
 點擊「Upgrade Previous Installation」(升級早前已安裝版本) 按鈕，保留您的資料庫。



如果您選擇「Perform a Full Installation」(安裝完整版本)，便會失去現有的資料庫。

需要更多有關 DHL Connect 的詳情嗎？

請於辦公時間內致電 (852) 2400-3521 與 DHL 電子聯繫部聯絡、電郵至 hkgwebmaster@dhl.com 或向您的DHL營業代表查詢。

DHL Express (Hong Kong) Limited
Level 26, Tower 1,
Enterprise Square Five,
38 Wang Chiu Road,
Kowloon Bay, Hong Kong

www.dhl.com.hk

Valid: 08/2010
Mat. No. MKT-ECC

